

# CAMELEON B

[View image slideshow](#)



## SPECIFICATIONS

**Length:** 42.5 Meters 139.4 Feet  
**Beam:** 8.51 Meters 27.9 Feet  
**Draft:** 1.85 Meters 6.1 Feet  
**Number of crew:** 8  
**Built:** 2005  
**Builder:** Proteksan Turquoise  
**Naval architect:** Paolo Caliani  
**Flag:** British  
**Hull construction:** Aluminium  
**Hull configuration:** Semi displacement  
**WiFi**

## ACCOMMODATION

**Number of cabins:** 6  
**Cabin configuration:** 5 Double, 1 Twin  
**Bed configuration:** 1 King, 1 Queen, 3 Double, 2 Single  
**Number of guests:** 12

## EQUIPMENT

**Engines:** Engines: 2 x 2285 bhp MTU 12V 396 TE94  
**Generators:** 2 x 80 kW Northern Lights M 668 TH T  
  
**Cruising speed:** 18  
**Fuel Consumption:** 500 Litres/Hr

## WATER SPORTS

**Tenders + toys:** 1x Castoldi tender 250 hp  
 1x Avon tender with o/b engine 80 hp  
 1x Yamaha Jet Ski  
**Water skis**  
**Handy Submarine**  
**Snorkeling & Fishing Gear**  
**Canoe/kayak**

## Windsurf

Motor yacht Cameleon B is a wonderfully seaworthy charter yacht with spacious interior and vast decks for guests, luxury and leisure. Built in 2005, she is a deep-sea blue water yacht of clever design offering top ocean views from many of her rooms. The 42m sleeps 12 guests in six cabins and boasts a professional crew of seven.

Cameleon B welcomes her guests onboard to large interiors equipped with excellent modern facilities. The top deck houses a movie room and office flooded by plenty of natural light while the saloon below offers impressive ocean views.

The aft deck measure an impressive seven metres in length meaning guests have maximum space for relaxing on any one of the wicker and deck chairs or sofas. Above on the bridge deck are two small tables which can be formed to seat up to 12 for social al-fresco meals while another outdoor dining area sits even higher up on the sun deck.



Running



Profile



Main salon



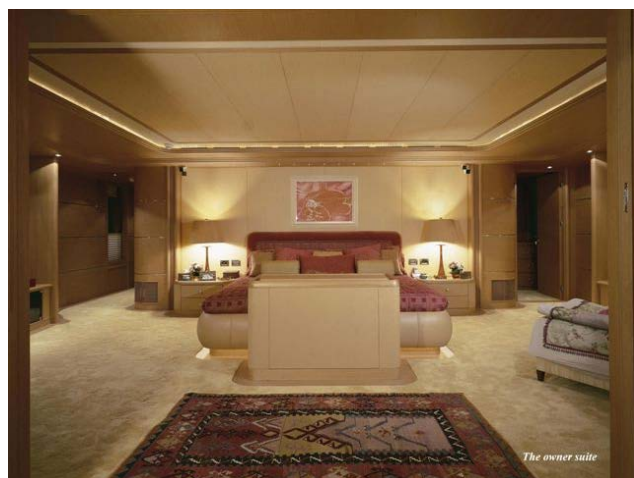
Dining room



**Master Suite**



**Master Suite from stb**



**Master Suite from stem**



**Master bathroom**



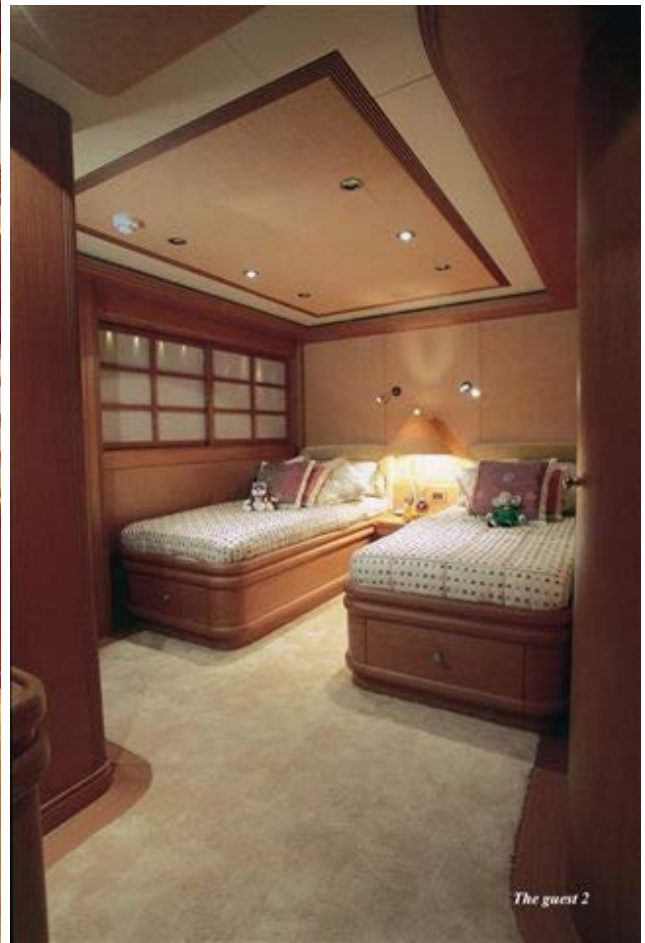
**VIP suite**



**VIP bathroom**



**Double cabin**



**Twin cabin**



**Tv detail**



**Bathroom**



**Cinema room**



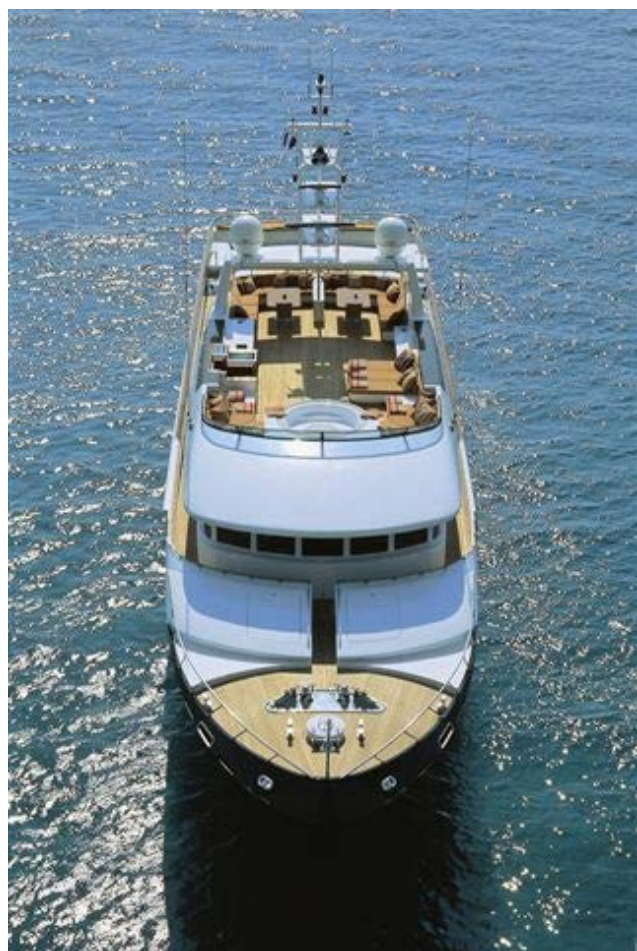
**Main aft deck**



**Upper aft deck**



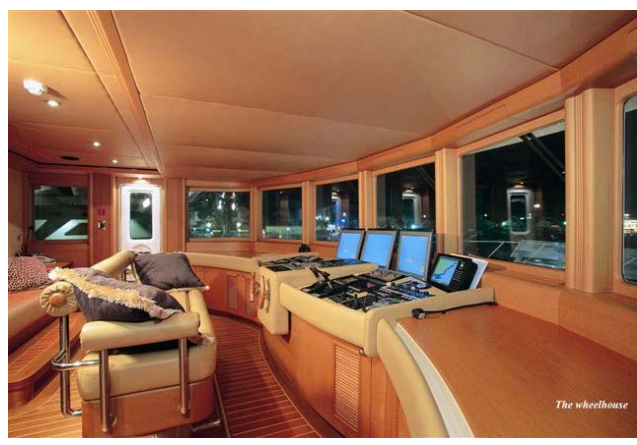
**Sun deck Jacuzzi**



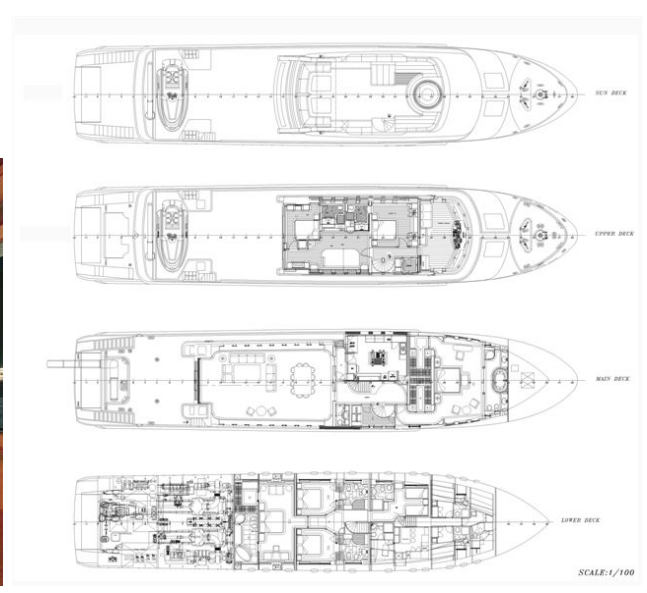
Aerial view



Aerial view 2



Wheel House



Layout

**This document is not contractual. All specifications are given in good faith and offered for informational purposes only. The publisher and company does not warrant or assume any legal liability or responsibility for the accuracy, completeness, or usefulness of any information and/or images displayed. Yacht inventory, specifications and charter prices are subject to change without prior notice. None of the text and/or images used in this brochure maybe reproduced without written consent from the publisher**