



Amaryllis





Amaryllis



Timeless elegance.
With an atmosphere and ambience which are both breathtaking and calming...Raymond Langton Design has translated the owner's love of Belle Epoque, Art Deco and Art Nouveau into an exquisite interior where every detail is bespoke and lovingly hand crafted.

The meticulous craftsmanship and attention to detail in the styling are equalled by the quality and exacting standards of the engineering. The 78 metre Amaryllis, built to exceedingly high specifications by Abeking and Rasmussen and featuring cutting edge technology throughout, slices effortlessly through the water at a cruising speed of 14 knots.



Travel in style.
A beautifully hand crafted wooden limousine tender by Graf will deliver you smoothly to the expansive aft-deck beach club.
On the sundeck a 5m x 2m Jacuzzi pool is an attractive feature at any time and never more so than at night when lit with shifting coloured light.



Numerous deck areas. Across Amaryllis' five decks, many colourful and comfortable areas offer an impressive variety of opportunities to dine, entertain or simply relax in sun or shade. The main deck features a seaward facing sofa from which to take in the ever changing views which are enhanced by special mood lighting that bathes the ceiling in coloured light. The owner's deck boasts a private terrace with a panoramic outlook and on the bridge deck, backlit honey onyx panels and pendant chandeliers afford a luxurious transition from interior to exterior.





Dine on deck.
The aft bridge deck is the main exterior dining location and the place to enjoy fresh local produce or freshly caught fish and seafood. The chef will conjure up magical dishes to please every palate and an impeccable and experienced crew are there to cater to guests' every whim.



Elegant dinner parties in the lavish dining room. Experience haute cuisine and the very finest service aboard Amaryllis. Creative menus are accompanied by spectacular wines to ensure an exquisite dining experience in this panoramic dining room. Continuing the Art Nouveau theme and colour palette from the adjacent piano lounge, the room's dramatic centrepiece is a glittering crystal and bronze chandelier above a circular Ziracote dining table.





Piano lounge.
 This room in its entirety encapsulates the glamour, vibrancy and technological excitement of the Belle Epoque era. The sweeping arc of the ceiling, floating on columns of crystal light, both frames and highlights the intricate marquetry of the walls and furniture. The self-playing Schimmel Pegasus piano is itself a work of art and one that again captures the aesthetic and ingenuity of that flamboyant time.



Main saloon and sky lounge.
 The lounges are light and airy with the warm ambience of honey coloured sycamore and beautifully crafted Macassar ebony furniture. Carefully integrated mood lighting perfectly complements each area, and in the sky lounge a 103" plasma television provides guests with a true cinematic experience.



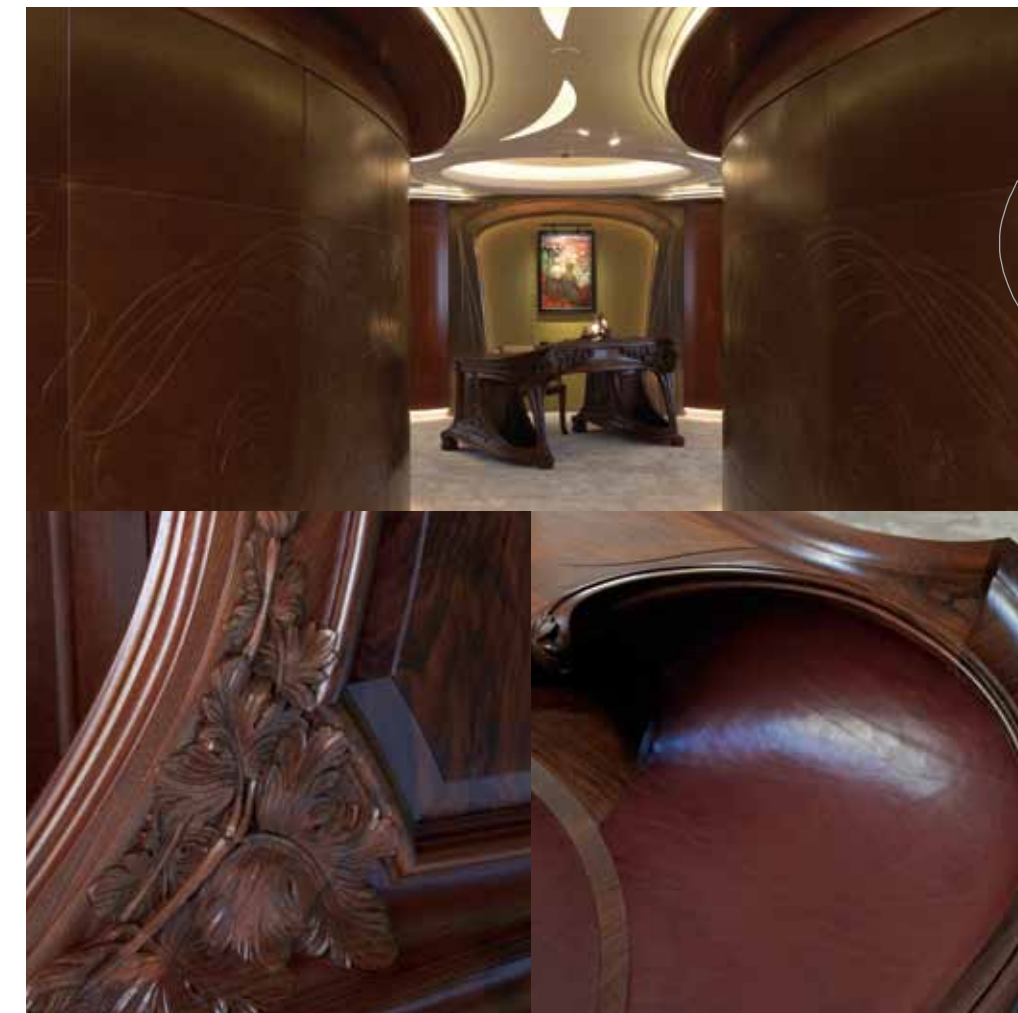


wner's suite,

The master bedroom features panoramic windows, a deep lounging sofa and a gloriously opulent hand carved English walnut Art Nouveau bed, whilst contrasting bamboo carpet is light and luxurious underfoot.

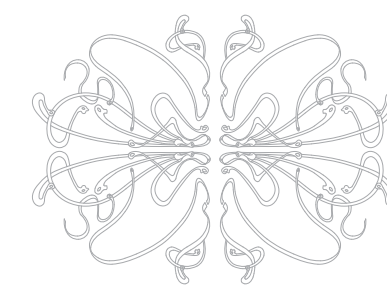
Stunning onyx clad his and her bathrooms and separate dressing rooms are accessed through hidden doors.



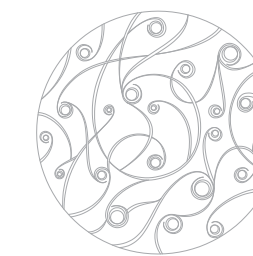


wner's study,

The owner's state rooms are entered through a dramatic curved lobby with walls wrapped in sculpted leather, leading into a full beam study. At its heart sits an impressive copy of an original Art Nouveau desk, one of the best examples of the extensive Silver Lining furniture on board. Carved from just two pieces of extremely rare English walnut dried by Silverlining for over 7 years and with leather embellishment, the desk took two craftsmen over a year to sketch, prototype, construct, carve and finish. Silverlining also created a bespoke chair from the same rare materials, which pairs perfectly with the desk.



VIP suite,
 The Art Nouveau theme continues
 and here introduces a Japanese
 influence. Soft taupe shades and silver highlights
 provide a calm and relaxing ambience. Sculpted
 leather ceilings and automatic Shoji screens
 reveal large panoramic windows and Kimono
 marquetry artwork by Silverlining masks the
 large television.



Guest suites.
 The four unusually spacious Art Deco inspired suites, each with walk-in wardrobes, provide further guest accommodation. Exotic period finishes such as stingray shagreen parchment, Macassar ebony, and beautiful Italian marble are used to create interiors that are both striking and harmonious.



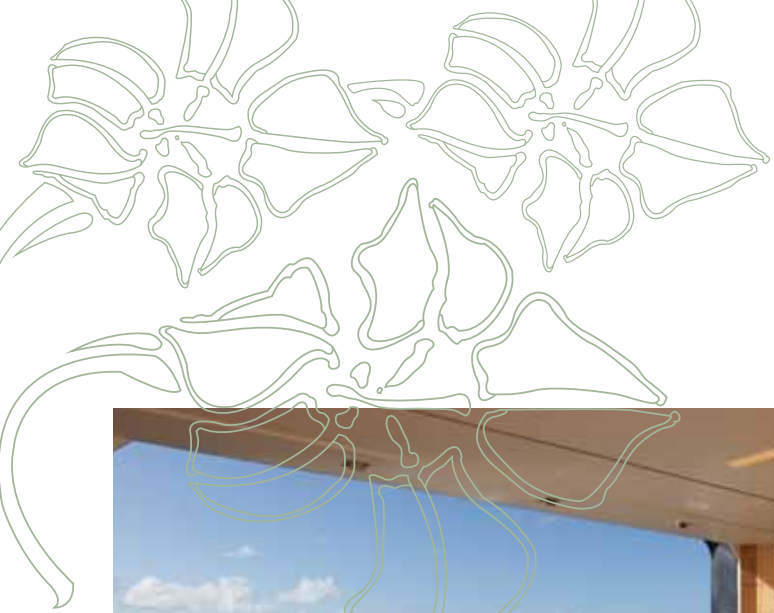
A

ction-packed adventure.

The comprehensive collection of toys includes the beautifully hand crafted limousine tender by Graf, a professional level wakeboard/waterski Mastercraft tender and a lightweight jet ski "wet bike" designed by a former world champion. The 8.8m Pascoe Beachlander tender with extendable pasarelle allows larger parties to island-hop in style, delivering guests straight on to the sand.



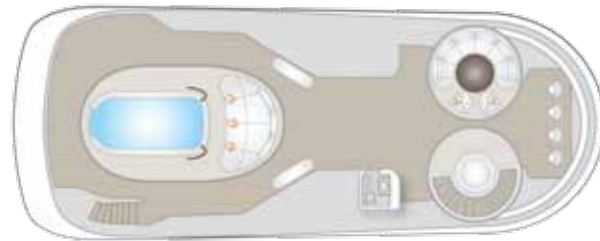




Relax in luxury.
The Japanese influence is particularly striking in the beach club, which incorporates ash and elm with accents of fumed oak. This calm and tranquil area opens on to the sea on two sides and features an Asian spa with plunge pool, sauna, steam room, massage area and gym with a complete complement of equipment.



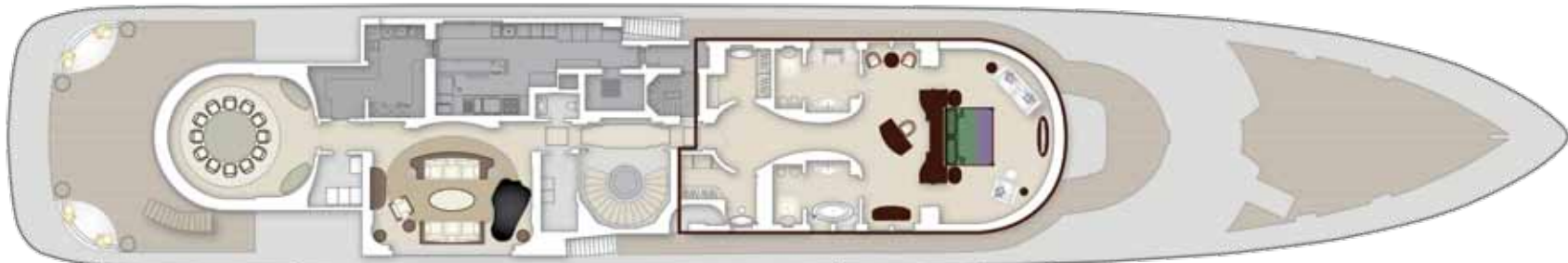
Sun Deck



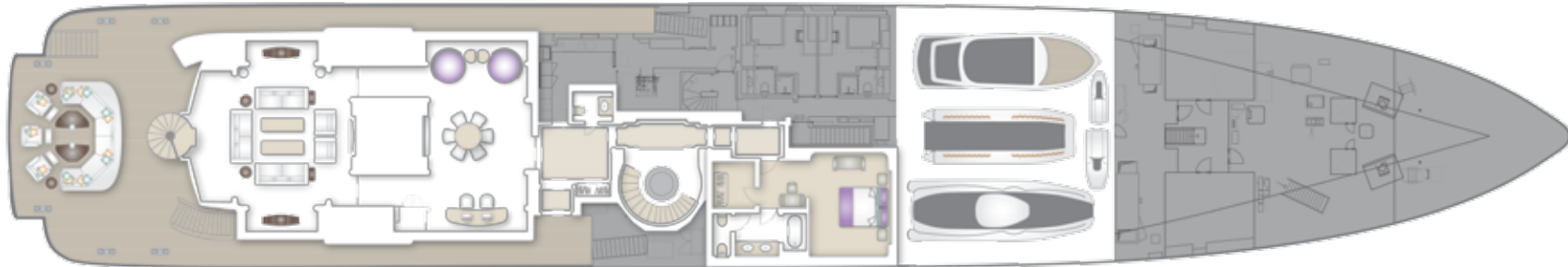
Bridge Deck



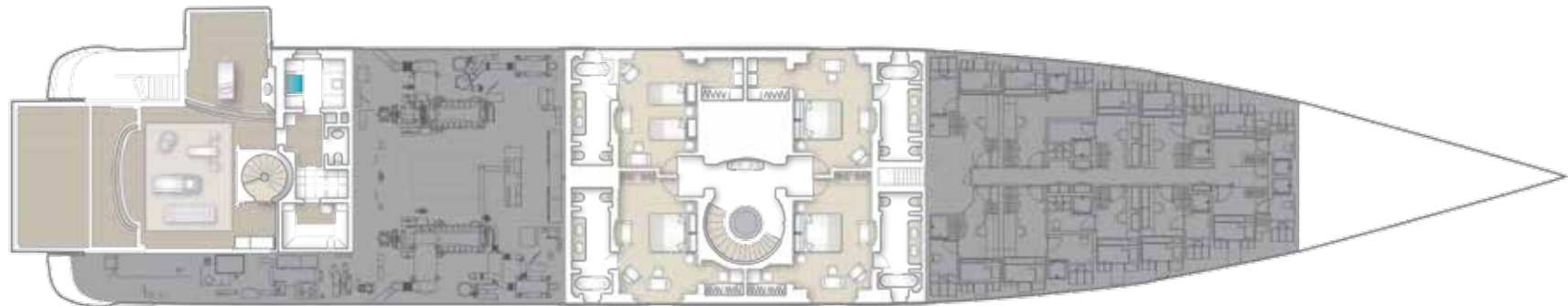
Upper/Owner's Deck



Main Deck



Lower Deck



Specifications.

Length:	78.4m (257'3")
Beam:	12.4m (40'8")
Draft:	3.4m (10'11")
Year Built:	2011
Builder:	Abeking & Rasmussen
Exterior Designer:	Reymond Langton
Interior Designer:	Reymond Langton
Classification:	Lloyds Register + MCA
GT:	2075
Flag:	Cayman Islands

Machinery.	
Main Engines:	2 x Caterpillar 3516B 2030hp
Generators:	3 x Caterpillar 412 kW
Stabilisers:	Quantum Zero Speed

Capacities.	
Fuel (max):	190,000l
Fresh Water:	60,000l
Max Speed:	16.5knots
Cruising Speed:	14knots
Fuel Consumption:	550lph

Accommodation.	
Guests	12 guests in 6 double and 1 twin
Crew:	23

Entertainment.	
Kaleidescape video on demand	
Crestron Controls	
LCD/Plasma televisions in all areas	
V-Sat Communication / Satellite TV	
iPod Docking Stations	

Communication.	
Wifi throughout	
Satellite communications	
Sailor VHF	
Simrad AIS	
DGPS MX-Marine navigation receiver	
Raytheon black box radar	

Special Features.	
Piano lounge with Schimmel auto-play piano	
Elevator from cabin deck to bridge deck	
Advanced mood lighting throughout	

Tenders & Toys.	
Graf 9m Ipanema custom wooden tender with Volvo 370hp	
Master Craft 6.6m X25 waterski tender	
Pascoe 8.8m Beachlander with Volvo 370hp	
Yamaha FZS jetski	
Yamaha SJ700 Lightweight Superjet jetski	
Wakeboards	
Fishing equipment	
Barbeque	

Deck Facilities & Amenities.	
5m x 2m Jacuzzi pool on sundeck	
Beach Club:	
Spa with sauna and steam room	
Plunge pool	
Gym	

BROCHURE
Photography: Ed Holt
Design and Production: www.QLuxuryMedia.com







Amaryllis

