



M/Y SEA SHELL





M/Y SEA SHELL
MAIN AFT DECK



M/Y SEA SHELL
MAIN SALOON



M/Y SEA SHELL
INTERIOR DINING AREA



M/Y SEA SHELL
MASTER SUITE



M/Y SEA SHELL
MASTER SUITE



M/Y SEA SHELL
MASTER ENSUITE



M/Y SEA SHELL
DOUBLE STATEROOM



M/Y SEA SHELL
DOUBLE STATEROOM



M/Y SEA SHELL
TWIN STATEROOM



M/Y SEA SHELL
GUEST ENSUITE



M/Y SEA SHELL
SKY LOUNGE



M/Y SEA SHELL
SKY LOUNGE



M/Y SEA SHELL
UPPER AFT DECK



M/Y SEA SHELL
SUN DECK



M/Y SEA SHELL
SUN DECK



M/Y SEA SHELL
SUN DECK

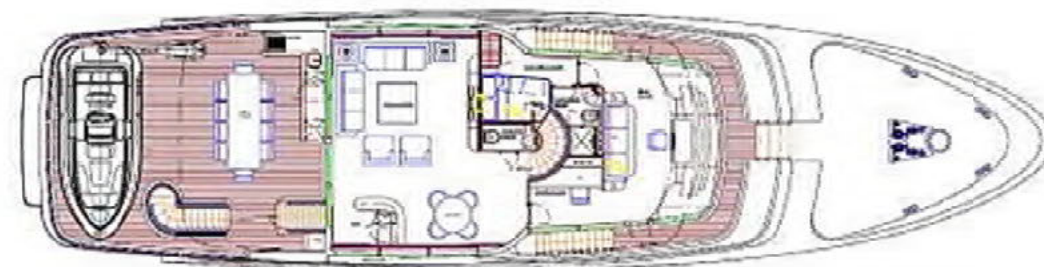
SPECIFICATIONS

LENGTH:	33.70M (110'6")
BEAM:	8.00M (26'2")
DRAFT:	2.50M (8'2")
YEAR BUILT:	2010
BUILDER:	FITTIPALDI YACHTS
INTERIOR DESIGNER:	LM DESIGN
NUMBER OF CABINS:	5
CONFIGURATION:	3 DOUBLE, 2 TWIN
ENGINES:	2 x 1000HP CATERPILLAR
GENERATORS:	2 x 58KW CATERPILLAR
CRUISING SPEED:	10.5 KNOTS
MAX SPEED:	14 KNOTS
FUEL CONSUMPTION:	180 LITRES/HR
CAPTAIN:	VINCENT ROSE (FRENCH)
TOTAL CREW:	6

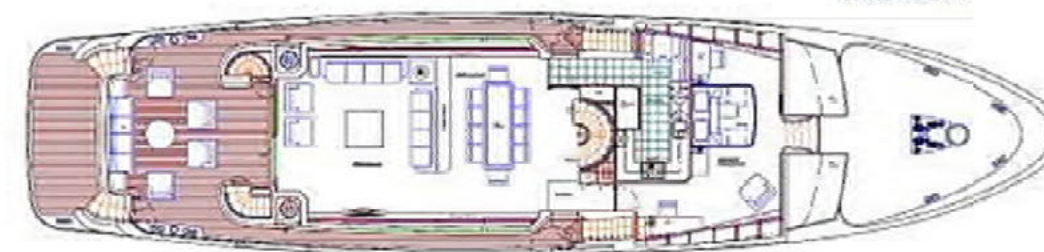
For more information regarding Sea Shell, please contact your charter broker.



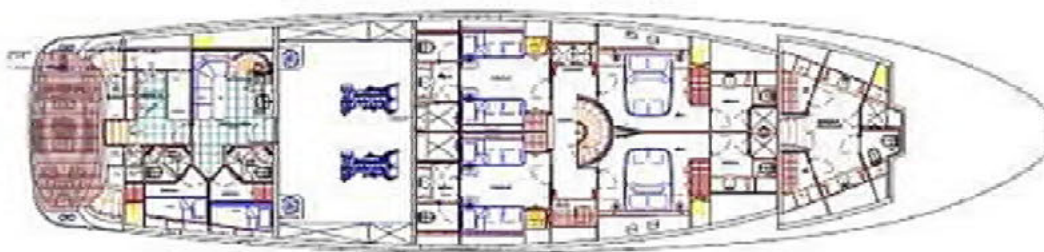
FLYBRIDGE



UPPER DECK



MAIN DECK



LOWER DECK

PARADISE

YACHT CHARTERS

[HOME](#) [DESTINATIONS](#) [YACHT SEARCH](#) [CHARTER TERMS](#) [YACHT PURCHASE](#) [NEWSLETTERS](#) [BLOG](#) [CONTACT](#)



CHARTER YOUR YACHT TODAY!

www.ParadiseYachtCharters.com
rjr@anythingonthewater.com
(954) 462-0091